

# ONE TRANSFORMATIVE GIFT: EXPONENTIAL IMPACT



**NAMING OPPORTUNITY:  
THE FOUNDATIONS  
SCHOOL**



**A \$10M LEAD PHILANTHROPIC INVESTMENT FUELS OUR WORK TO TRANSFORM PALM BEACH COUNTY-- ONE STUDENT AT A TIME.**

For over 30 years, CCE has been actively addressing the elementary illiteracy crisis through proven and successful measures, positively altering the trajectory of thousands of children in Palm Beach County. In 2020, we launched **The Foundations School**, a K-5 independent school focused on building foundational academic skills in an arts-integrated environment. By creating accessible pathways to our educational model and dramatically improving proficiency rates for our students, we are making an exponential impact on the sociological and economic landscape of Palm Beach County and disrupting the pipeline between illiteracy and poverty.

A multi-phase campaign has fueled our work, having raised \$16M (to date) in philanthropic support toward our \$25M goal. A lead philanthropic investment of \$10M will propel us over the campaign finish line-- thereby ensuring we have the vital support needed to continue our work in perpetuity for the betterment of each child served and for the betterment of our entire community.

## **HONORING PHILANTHROPY THROUGH NAMING**

To acknowledge the exponential impact generated by a \$10M lead commitment, CCE will name **The Foundations School** in honor of the individual or family who makes this extraordinary philanthropic investment. Naming rights for the School will be acknowledged in all external marketing and communications, and the entrance to our 28,000 square-foot building on our 4-acre campus will serve as a prominent and fitting place to honor this unique philanthropic commitment.



# OUR IMPACT

## ACHIEVING OUTCOMES

89%

Percentage of third graders at The Foundations School reading at grade level in 2023, increasing from the proficiency rate of 27% two years ago and well over the 50% state average and 21.5% average in schools closest to our campus.

## CREATING ACCESS

0

Students turned away due to inability to pay. We believe every child deserves the opportunity to build the foundational skills needed to be successful in school and life, fostering a path to civic engagement and social mobility.

## EXPANDING OUR REACH

180

Number of students we can annually enroll if we reach our full capacity through philanthropic support and by growing our endowment. *(We will add 30 new students each year until we reach full capacity of 180 students)*

## FOSTERING EQUITY IN EDUCATION

86%

Percentage of enrolled students from diverse or historically underrepresented communities, many of whom are zoned to attend schools that demonstrate poor performance on standardized testing. Our model enables us to intervene, creating pathways and opportunity for children who need it most.

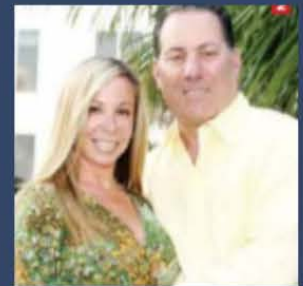
## AND ABOVE ALL: WATCHING STUDENTS THRIVE



Students flourish in an environment where everyone is invested in their success. CCE's county-wide afterschool programs served over 3,200 students in 2022-2023, and an additional 180 students within The Foundations School once at capacity.

## A COMMUNITY BESIDE US

The support and generosity of community members who believe in our vision make our work and impact possible. Answering the call to action, **Dan & Susan Catalfumo** have made a significant investment to name our new 4-acre campus, and **Susan & Dom Telesco** have done the same to name the Arts & Science Center. Both significant gifts demonstrate their commitment to our mission and to the Palm Beach community.



Susan & Dan Catalfumo



Susan & Dom Telesco

### Other philanthropic partners:

- The William H. Pitt Foundation
- Cornelia T. Bailey Foundation
- Split Rock Foundation
- Blue Sea Capital